

## Concerned about your childrens safety and want to avoid a fine?



Shire of  
Serpentine  
Jarrahdale

Sustainable. Connected. Thriving!

Rangers are frequently identifying vehicles illegally parked around school areas. Creating a hazard to children and unnecessarily impeding traffic. Some of them are repeat offenders. There are reasons why you cannot park in some places, and safety of yourselves and others are the main reasons why. You are likely to be fined if you park illegally.

We often hear, "Where do you expect us to park?"

This flyer is to help identify where you can park and where you cannot.

### **Keep foot paths clear of vehicles.**

Pedestrians, gophers, prams, etc. are entitled to use them and not be forced to walk on the road. Other vehicles can go around you on the road. **Penalty \$60**



### **Don'ts:**

**Do not block pedestrian ramps.** **Penalty \$60**



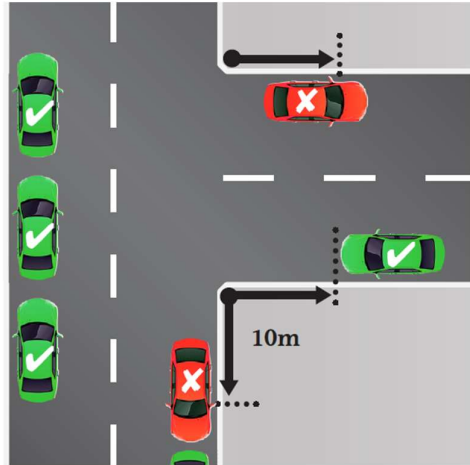
**Don't block driveways**, unless you have have permission of the owner. **Penalty \$60**

**Do not park on a verge** without the property owner's permission. Ask them, they may not mind. **Penalty \$60**



**Do not parallel park** to another vehicle so it blocks the road. It is an annoyance to the community and an offence. **Penalty \$50**

**Do not park within 10m of an intersection** **Penalty \$60**



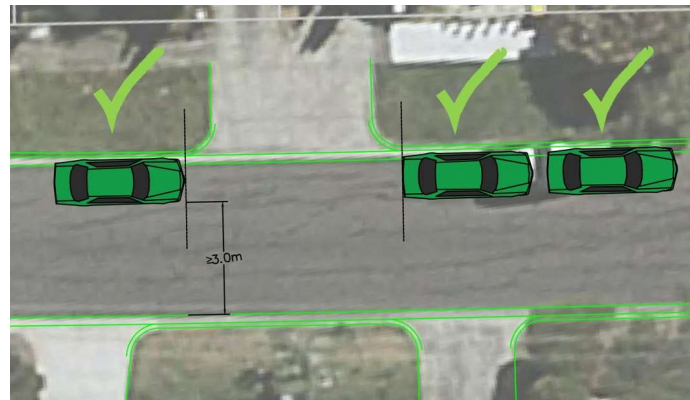
**Do not park in a ACROD bay unless you have a valid permit displayed. You will get a \$300 fine if you park illegally in these bays.**



**Penalty \$60**

### DO's

**Do park on the road. Vehicles can get around you.**



**Do park the same direction as traffic** **Penalty \$50**



**There are always legal and safer alternatives to illegal parking.**

If you have any questions, please don't hesitate to contact the Shire Ranger team on 95261111 or email us at [info@sjshire.wa.gov.au](mailto:info@sjshire.wa.gov.au)